



Accuracy. Control. Results.

Peachtree

Peachtree by Sage Premium Accounting for Construction 2010

Peachtree Premium Accounting for Construction 2010 provides you a powerful, yet flexible, solution specifically designed to help you meet the challenges you face with your construction company.

Whether you have a full-service construction company or you're a specialty subcontractor, you will appreciate core features that will help you achieve long- and short-term goals. You can have confidence that your numbers are right and you can use those numbers to make important business decisions, with tools such as:

- The Internal Accounting Review¹ helps to find mistakes before they become problems.
- Locking prior accounting periods once the financial statements are finalized to prevent unauthorized alterations.

The Tools You Need to Get Started:

- First-time Peachtree customers get 30 days of free support² upon product registration. Upgrading customers receive one free support call within 30 days of registration. Our Support Specialists are available to get you set up and answer any questions.
- Additional in-product options such as the Setup Wizard, an online knowledgebase of FAQs, the interactive "How Do I?" for specific questions, and more than 20 instructional demos.

Peachtree Premium Accounting for Construction includes all the features from our Peachtree by Sage Premium Accounting 2010 product, plus:

- **Subcontractor Insurance Tracking**

Store insurance expiration dates within Peachtree, so you'll get a warning when you try to pay a subcontractor whose insurance has expired. Store and report on company name, policy number, and policy limit so you can easily review insurance expiration dates.

- **Labor Burden Assessment**

Allocate a percentage of an employee's overhead costs (such as taxes, insurance, benefits, and more) to any job.

Job Defaults

Billing Labor Burden Custom Fields

Labor Burden Percent: 30.00

Labor Burden Cost of Sales Account: 57000-00 Direct Labor

Applied Labor Burden Account: 50000-00 Product Cost

Labor burden percent is used when creating new jobs. It can be changed on each job and on payroll checks. The accounts can be changed on each payroll check.

OK Cancel Help

- **Retainage Management Using Accrual Based Accounting**

Know what your clients are holding back, and how much leverage you have with your vendors.

- **Progress Billing**

Valuable if you bill against a contract. You can create invoices based on the job's current progress or specify that billing be based on a percentage of the job's completion, a percentage of estimated job revenue, or a percentage of each line item.

- **Construction-Specific Operational Reports, such as:**

- Contract Transmittal Letter
- Assembly Planning
- Component Pick List

Maintain Jobs

File Edit Go To Window Help

Close New List Save Save & New Delete Change ID Reports Attachments

*Job ID: Aaron Start Date: Mar 01, 2009 End Date: Mar 15, 2009 Inactive

Description: Aaron House Remodelling

Use phases to track job in more detail

General Estimated Expenses & Revenue Notes

Supervisor: Trotter Job Type: REMODEL

For Customer: Aaron PQ Number:

Job Address: 3545 Jones Boulevard Billing Method: Percent of Completion

City, ST, Zip: Duluth GA 30029 Percent Complete: 97.72 As of: 3/15/09

Country: Labor Burden Percent: 28.00 Retainage Percent: 10.00

Job Beginning Balances

Customizable Fields

1. Second Contact: Mary Aaron 4. Contract Date: 2/26/07

2. Site Phone #: 770-555-1155 5.

3. Work Phone #: 770-555-6048

Customize these fields for your business

NAME

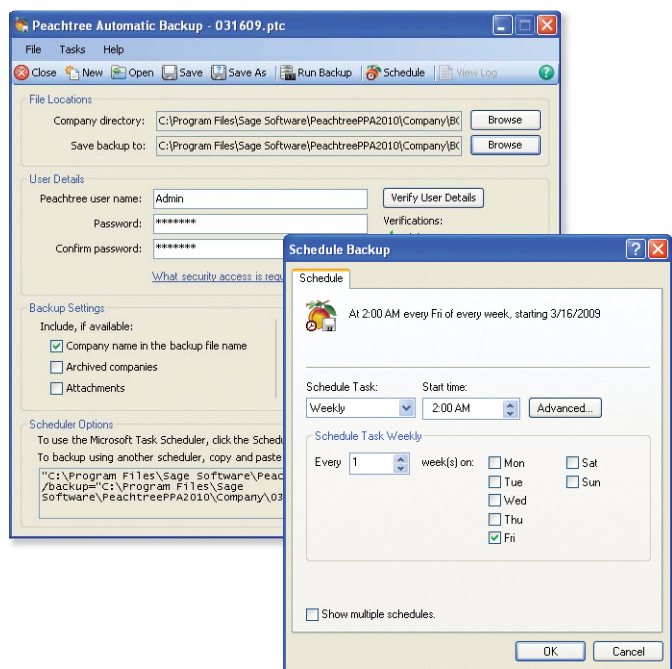
E-MAIL

PHONE

New for Peachtree 2010!

NEW! Automatic Backup

Automate your backup process for any time that is convenient for you and your company! With Peachtree Automatic Backup, set up your schedule once, and the rest is taken care of for you. Peachtree doesn't even have to be running to make the scheduled backup.



NEW! Business Analytics³

See how your company is performing compared to other companies. Get instant access to view up-to-date key financial trends and compare items such as Total Revenue, Gross Margin %, Days Sales Outstanding, and much more. Use this tool to help improve your business's financial health and make critical decisions.

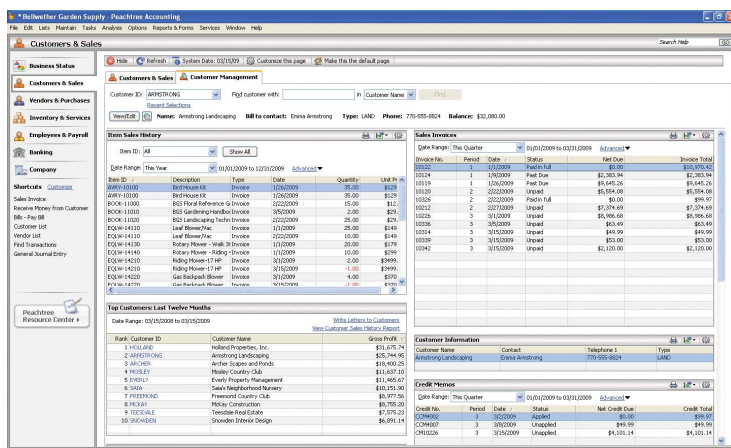
IMPROVED! In-Product Advisor

Learn the best way to work within Peachtree by leveraging our in-product user tips. These tips will help you discover functions or features that will assist you in learning other areas of the product quicker.

NEW! Customer Management Center

Save time by viewing the details you need all in one place to better manage and serve your customers without missing a beat.

- Create a customized dashboard view of your customers' information such as their converted and unconverted quotes, invoices, receipts, time tickets, aged balances, and much more. Drill down to the detail and quickly take action.
- Easily export customer information to Microsoft Excel^{®4} or PDF, or launch an e-mail⁵ from the Customer Management Center.



NEW! Employee Management

Store key employee data within Peachtree such as emergency contact, performance reviews, employment details like hiring date and I-9 verification, additional phone numbers, and much more. And easily stay on top of your employees' records by receiving alerts and reminders for upcoming key tasks such as review dates.

And Many More Features...

For more accounting and construction-specific features of Peachtree Premium Accounting for Construction, go to www.peachtree.com

1 Sage is not liable or responsible for any fines or penalties that may result from errors in your company accounting records. The Internal Accounting Review is not intended to uncover all questionable transactions.
2 Free support provided for currently supported products. Additional support is available for a fee. Support specialists reserve the right to limit a call to one hour or one incident.
3 Internet access required. Service is embedded within Peachtree 2010, however is also available for Peachtree 2008 and 2009 products via a separate application download from www.peachtree.com
4 Requires Microsoft Excel 2002, 2003, or 2007.
5 Requires Microsoft Outlook 2002, 2003, or 2007; Outlook Express 5 or 6; or other MAPI compliant e-mail programs.